

# ***Airport Map in the CSA-Tool***

## ***Quick Guide***



**Airport  
CDM  
@  
FRA**



Author: Airport CDM Team Frankfurt  
Date: 21.10.2020  
Version: 1.0

Fraport AG  
60547 Frankfurt am Main  
Tel. (069) 690-28544  
<http://cdm.frankfurt-airport.com/>

Copyright © 2010 by Fraport AG

Distribution and reproduction of this document, processing and forwarding of its contents are not permitted, unless explicitly approved. Non-compliance will result in the obligation to pay damages. All rights reserved, especially in the case of patent grant or GM entry.

## *Releases*

<b>Release</b>	<b>Comment</b>	<b>Author</b>
0.1	Initial concept	E. König
0.2	Review by A-CDM Team	S. Hilger
1.0	Publishing	E. König

## *List of contents*

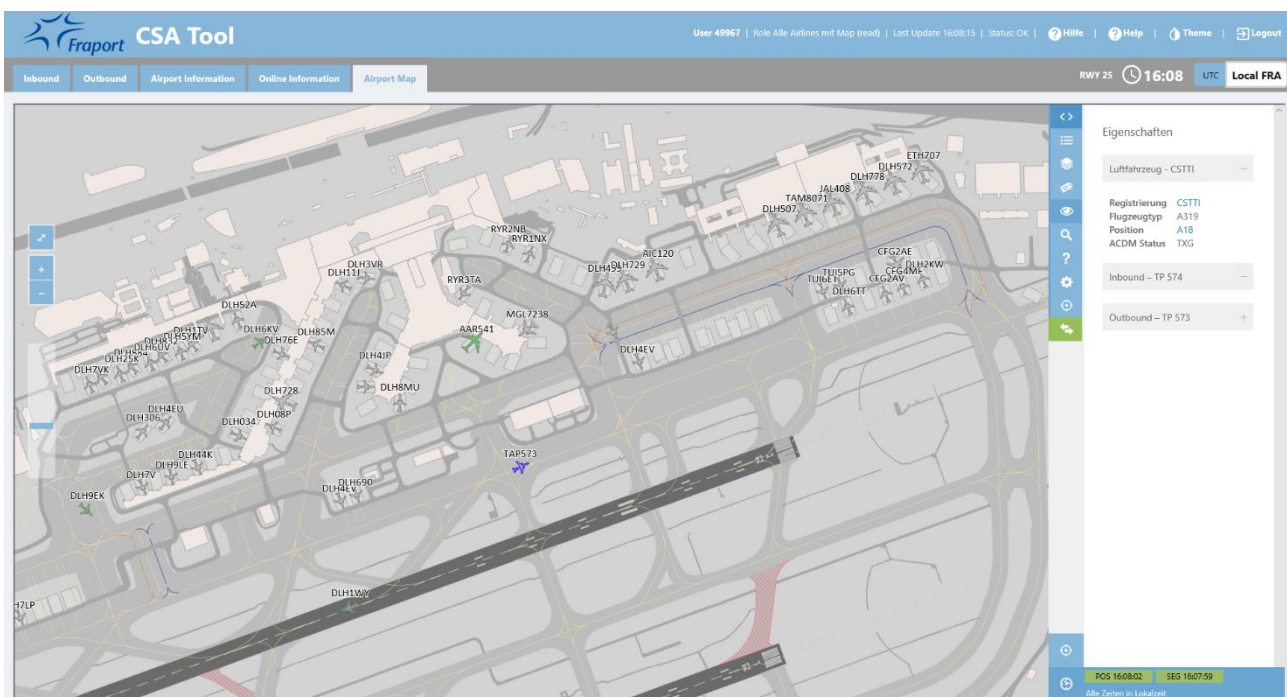
<b>List of contents .....</b>	<b>2</b>
<b>1. General information .....</b>	<b>3</b>
<b>2. Map navigation .....</b>	<b>3</b>
<b>3. Menue navigation and settings .....</b>	<b>4</b>

# Quick Guide – Airport Map in the CSA-Tool

## 1. General information

The Airport Map was implemented as a new functionality In the Common Situational Awareness Tool (short: CSA-Tool). If the user account / x-account has been assigned the required authorization, the tab "Airport Map" is available in addition to the four main views "Inbound", "Outbound", "Airport Information" and "Online Information".

The airport map is an embedded application (iframe technology) and therefore not part of the CSA tool itself. For this reason, **all times and timestamps in the airport map are displayed exclusively in local time (Local FRA)** and not configurable in "UTC" or "Local FRA" as it is usually the case in the CSA tool.



## 2. Map navigation

Use the scroll function of the mouse to change the display of the airport map. The mouse wheel allows you to scroll forward to enlarge the view and backward to zoom out. Also, the selected map section can be moved in all directions by clicking and holding the left mouse button.

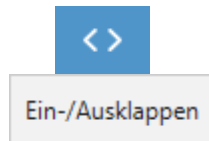


You can also use the buttons to zoom in or zoom out.



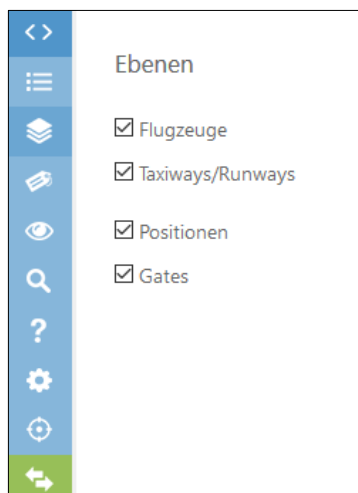
This button allows you to switch the Airport Map to full screen. Use the "ESC" key to exit the full screen mode.

### 3. Menue navigation and settings

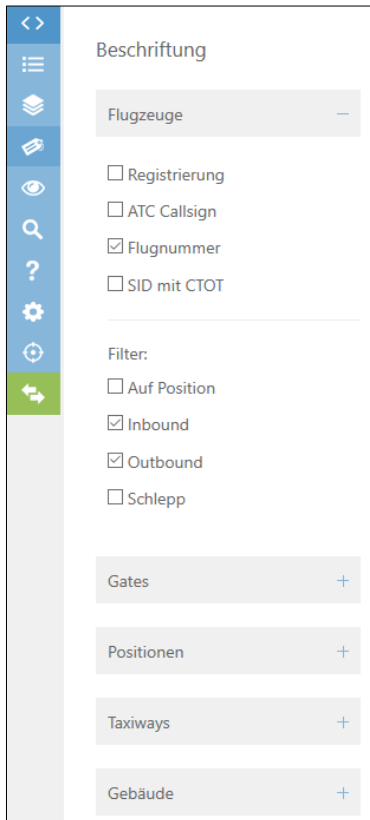


On the right side of the screen you will find the selection menu of the CSA tool, which you can fold in and out with the arrow keys.

Selection menu:



Under the menu item "**Ebenen**" you can display or suppress the visualization of aircraft, taxiways/runways, positions and gates in the Airport Map.

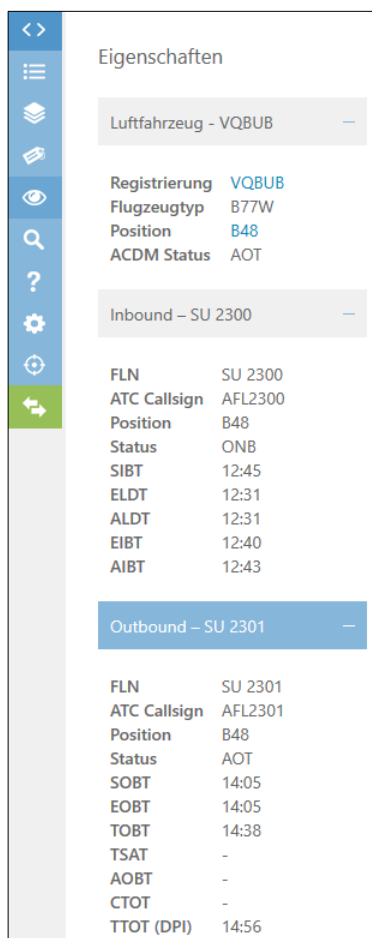


The menu item “**Beschriftungen**“ is grouped into 5 categories.

In the category “Flugzeuge“ you have the possibility to adjust the display options of the aircraft labels individually. With a filter the display can be reduced to the desired flight movement types.

In the selection shown here, only active inbound and outbound flights with labeled flight number are shown in the Airport Map.

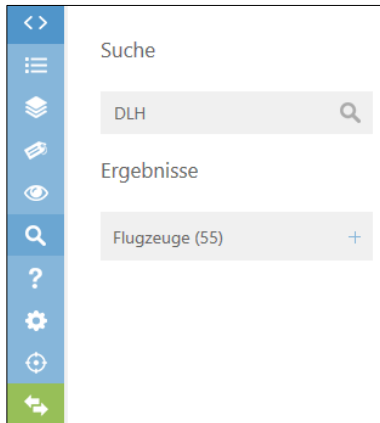
In the further categories "Gates", "Positionen", "Taxiways" and "Gebäude" you have the possibility to display the designation of the respective infrastructure.



As soon as an aircraft has been selected with a mouse click in the Airport Map, detailed flight information is listed under the menu item "**Eigenschaften**" for inbound and outbound flights.

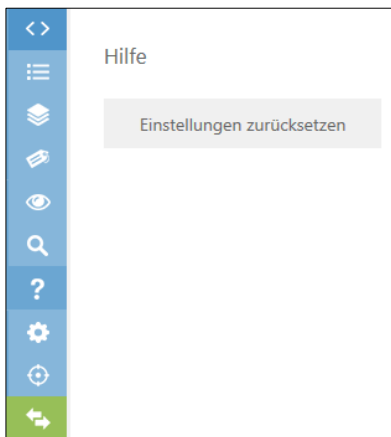
Furthermore a mouse-over function has been implemented in the Airport Map. As soon as you leave the mouse pointer on an aircraft label, a pop-up window opens, which also contains the flight information relevant for the A-CDM process.

Flugzeug	VQBUB	FLN (Inbound)	SU 2300	FLN (Outbound)	SU 2301
Position	B48	ATC Callsign	AFL2300	ATC Callsign	AFL2301
Flugzeugtyp	B77W	SIBT	12:45	SOBT	14:05
ACDM Status	AOT	ELDT	12:31	EOBT	14:05
		ALDT	12:31	TOBT	14:38
		EIBT	12:40	TSAT	-
		AIBT	12:43	AOBT	-
				TTOT (DPI)	14:56
				CTOT	-



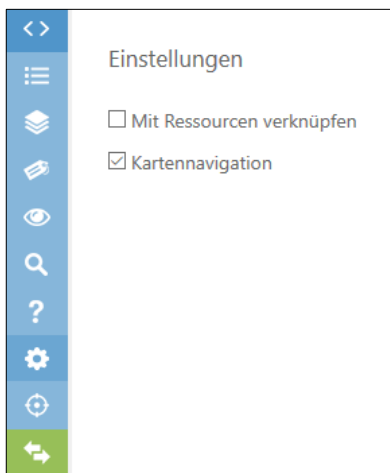
In the menu item "**Suche**" you can search the Airport Map with an intelligent search function using the following search criteria: callsign, flight number, registration, gate, position, aircraft type, ACDM status.

While typing, the result is updated and filtered immediately.



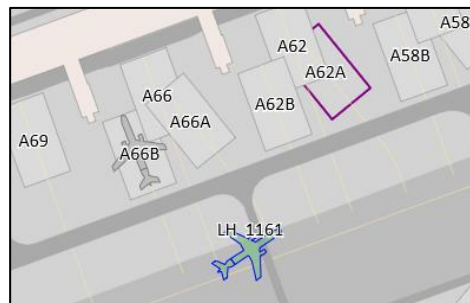
In the menu item "**Hilfe**" you have the possibility to click on the button "Einstellungen zurücksetzen". This function resets all individual menu settings to the standard setting.

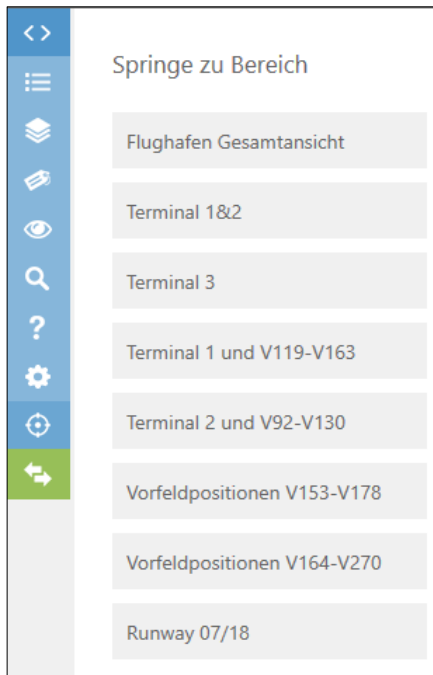
**Note:** If there are display problems in the Airport Map (e.g. no planes visible), it is suggested to use the button "Einstellungen zurücksetzen". In most cases the display problems can be solved this way.



In the menu item "**Einstellungen**" you can make two individual configurations

- The "Map Navigation" (see chapter 2) can be displayed or suppressed in the Airport Map.
- If you activate the "Ressourcen verknüpfen" function, an aircraft will be linked to its respective arrival or departure position and both elements will be highlighted as soon as the aircraft is clicked on.





In the last menu item „**Springe zu Bereich**“ you can select preset areas of the airport.

In the lower area of the menu navigation there is a technical status display of the connected data interfaces.



POS = Timestamp of the AODB

SEG = Position data from ground radar

For both data sources the time of the last update is shown.

**Green** = Actual data situation

**Yellow** = No update in the last 10 minutes

**Red** = No Update in the last 15 minutes